



Klargester Accredited Installers

Guaranteed Professionalism and Peace of Mind

The benefits of using a...



...Klargester
Accredited
Installer

Sustainable, Reliable, Affordable



Kingspan®

Professionalism and peace of mind

Experience shows that correct installation is a prerequisite for the long-lasting and successful operation of any wastewater treatment product. It's easy to see how buildings differ from one another above the ground, but far less simple to see how conditions vary from one site to the next below the ground: there is no such thing as a 'typical site' and therefore no such thing as a 'typical installation'.

Varying ground conditions pose very particular challenges, meaning that any contractor needs both experience and expertise. Errors made at this stage can often resurface at a later date, leading to inconvenience and expense to rectify the problem.

This is why using an installer with the experience and expertise to install your product is highly recommended.

Introducing the Klargester Accredited Installer Network

Strategically placed around the UK and Ireland, Klargester Accredited Installers are appointed following a selection process which assesses their installation expertise, reputation and financial status.

By using an Accredited Installer, you can be assured that you are in the secure hands of wastewater industry professionals. Installers can assist at any stage of your project requirements – from the early stages of system design, through the selection and installation of the correct equipment, to connecting to local drainage discharge point and electrical networks. Additionally, Accredited Installers offer a full co-ordination and management service to deliver a complete turn-key solution for your peace of mind.

National coverage, local knowledge

Wherever you are in the UK and Ireland, we have an Accredited Installer serving your location. These teams have an intimate knowledge of the prevailing ground conditions and soil types of their local area and can advise on the suitability of various solutions based upon that knowledge.

Furthermore, assistance can often be supplied in obtaining the necessary discharge consents and building approvals from the appropriate local bodies with whom the installer will have a good, regular working relationship.

More than just groundwork professionals

Klargester Accredited Installers have the expertise to survey and evaluate the specific requirements of any site plan – from a small domestic house to a large commercial scheme. Their broad knowledge encompasses the basics such as performing and evaluating the results of a percolation test to more technical factors; establishing falls across and through sites, drain depths and entry levels into treatment plant, drain runs through properties and connection sequences to name but a few.

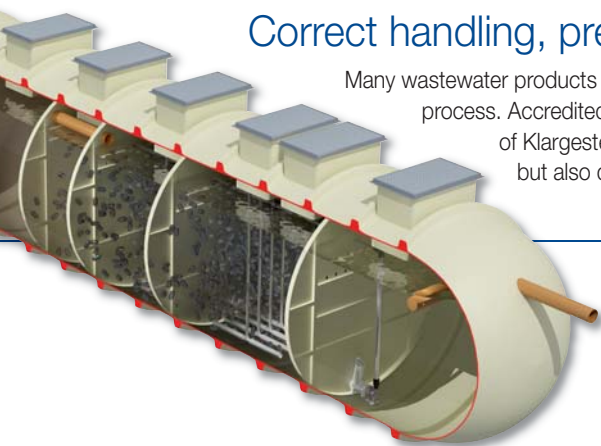
Installation companies are also specialists at working at below-ground depths safely and efficiently. This is often not the case for straightforward groundwork contractors who may have to outsource such expertise.

Plant and machinery proficiency

Earthworking calls for the use of highly specific machinery for excavation, lifting and waste removal. Accredited Installers are qualified and familiar with plant operation. Personnel possess the appropriate operating licenses, with many owning their own machinery, saving both time and undue expense.

Correct handling, precise installation

Many wastewater products suffer damage as a result of incorrect lifting and manoeuvring during the installation process. Accredited Installers are accustomed to the correct handling and installation of all models and sizes of Klargester wastewater products. This care and attention is applied not just at the installation stage, but also during initial off-loading and general site storage.





Equipment and materials

It is preferable in any construction project to minimise time on site and avoid any unnecessary downtime. Wastewater product installations are no exception.

Through familiarity gained by long experience, Klargester Accredited Installers arrive on site with all necessary equipment and materials to hand ensuring a quick, trouble-free installation and minimal disruption.

Troubleshooting

By paying close attention to a wastewater product's performance and operation, Accredited Installers can identify any problem before a hazardous or costly situation arises and advise on a preventative procedure.

Advice can also be given on upgrades or modification to a site's drainage system in line with future expansion or possible change of use.

Clarity and security

As part of their Accredited Status, member companies are required to carry appropriate third-party insurance with a minimum liability cover of £1,000,000 and operate to strict Health & Safety policies when on-site.

Naturally, before any work begins, a no-obligation, detailed written estimate or quotation (setting out precisely what is included and excluded) is supplied as standard procedure.

Priority manufacturer support

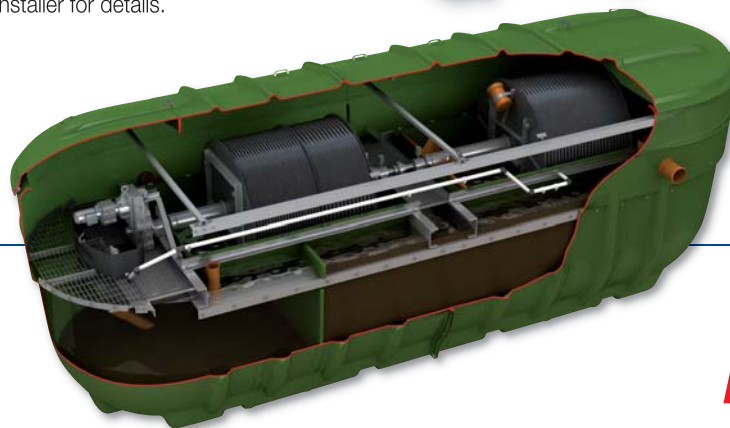
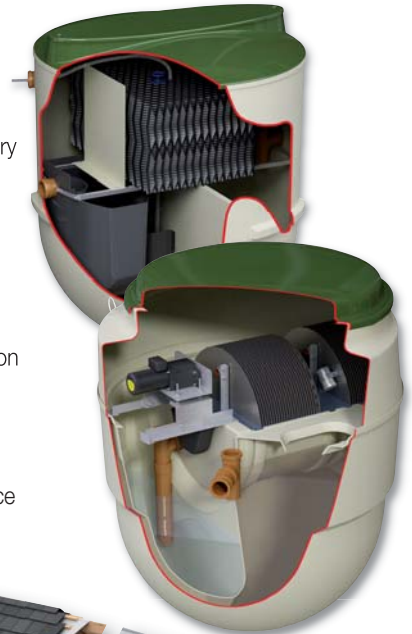
Accredited Installer scheme members receive dedicated manufacturer support from Klargester. This delivers a number of key benefits:

- Direct access to Technical Support department
- Expert advice on treatment process design and process engineering
- Advance updates on industry developments and the latest legislation
- Factory product training
- Express Parts service for ongoing maintenance should you choose to take out a service contract to keep your plant in tip-top working order

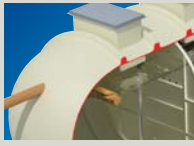
Additional services

In addition to installation, many of the member companies offer ancillary services such as drain clearance and tank emptying or can advise on third-party companies familiar with Klargester products.

Most also assist with the commissioning and servicing of selected wastewater products. Just ask your installer for details.



The Market Leading Range of Klargester Sewage Treatment, Pumping and Drainage Solutions from Kingspan Environmental



Commercial Sewage Treatment Plants



Large Capacity Pumping Stations



Stormwater Attenuation Systems



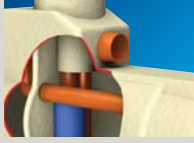
Domestic Sewage Treatment Plants



Packaged Pump Systems



Reed Beds



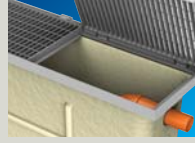
Oil/Water Separators



Septic Tanks



Below Ground Storage Tanks



Grease & Silt Traps



Packaged Drainage Systems

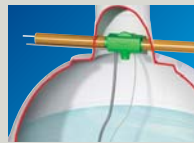
KingspanWater Rainwater Harvesting Solutions



Residential & Commercial Rainwater Harvesting



Domestic Rainwater Harvesting



Garden Watering Systems

Presented by:



Issue No. 1: September 2010



Kingspan Environmental

College Road North, Aston Clinton, Aylesbury, Buckinghamshire HP22 5EW
 Tel: +44 (0) 1296 633000 Fax: +44 (0) 1296 633001 Scottish Office: Tel: +44 (0) 1355 248484
 email: info@kingspanenv.com

Visit our website www.kingspanenv.com, or our group website www.kingspan.com

